



Clackamas County  
Cultural Plan  
for  
Arts ■ Heritage ■ Humanities  
2008-2012

Developed by:





# Cultural Plan

*Our rivers and waterways are connectors and so important to our communities for recreation, tourism, economic development and heritage. They are a natural focal point for cultural development.*

*There is a very strong undercurrent of pioneerism, this notion that we are the folks that came across the trail to this place. Something special happened here and it's our role to preserve and enhance it.*

## TABLE OF CONTENTS

	Page
Introduction .....	2
Background and Context .....	2
The Coalition: Who We Are .....	2
Vision .....	3
Clackamas County in 2008: Strengths and Challenges .....	4
2008 - 2012 Cultural Plan Goals .....	6
APPENDICES .....	8

*Culture is an umbrella. When you address things like beauty and vision, you get away from negativity because you cannot make things happen without being imaginative, innovative and creative.*



# Cultural Plan



End of the Oregon Trail  
Interpretive Center  
Oregon City



Sandy River Crossing  
Photo Courtesy of  
U.S. Forest Service



Gallery Without Walls  
Lake Oswego

*Our "culture" is the sum of the places and activities in our lives that define who we are...our heritage, our arts, our parks and wilderness areas, our many festivals, all our rivers and the various other elements in our communities which we love and would not want to do without.*

## INTRODUCTION

The **Clackamas County Cultural Plan for Arts, Heritage and Humanities** is a call to action for increasing support for local culture and a vehicle for distributing the Oregon Cultural Trust's Community Cultural Participation Grant funds. The Plan includes an assessment of the strengths and critical issues facing arts, heritage and humanities in Clackamas County and specific goals, actions and benchmark indicators of success.

## BACKGROUND AND CONTEXT

As part of the Oregon Cultural Trust's founding legislation, each Oregon county and the nine federally-recognized Tribes were asked to establish a Cultural Coalition and to create a plan for local distribution of Cultural Trust dollars. The first Clackamas County Plan for Arts, Heritage and Humanities, created in 2004, was the result of an eighteen-month investigative process engaging 180 citizens in interviews, forums and focus groups. Since the 2004 Plan was approved and the Cultural Coalition began its work, it has become clear that the Coalition's highest purpose and wisest use of limited resources is to nurture, support and invest in the efforts of others through granting funds.

## THE COALITION: WHO WE ARE

Allocating Cultural Trust funds in the form of grants is the Coalition's primary function, however, the Coalition strives to nurture and brighten the cultural scene throughout Clackamas County. Members represent a diverse landscape geographically and organizationally including music, education, art, sculpture, dance, writing, heritage, business and celebratory events. The Coalition endeavors to encourage support and participation in our culture, that is, everything that revives the human spirit.



# Cultural Plan

## COALITION VISION

*In 2012, Clackamas County will be a place  
Where...*

*Whenever you bring like-minded people together, you can address some of the big problems. People who are active in culture and humanities tend to look optimistically to the future and problem solving.*

*Arts, heritage and humanities are broadly acknowledged, integrated and valued for their contribution to building communities and bridging understanding among diverse people*

*Cultural participation is truly accessible* and is the norm, not the exception

*Culture is supported* by a strengthened network of organizations, leadership, professional management and partnerships

*Community investment is sustained* through a mix of public and private planning, decision-making and funding

*K-12 education encourages* all students to experience cultural richness that becomes an integral part of life-long learning

*Newcomers and visitors are welcome*, bringing their energy, ideas and resources

*A treasure trove of ideas, experiences and teachings shape and inspire* individuals and families to participate and join in civic engagement throughout their lives



*Pioneer Church  
Carver*



*Hands-on Artmaking  
Clackamas County*



*Summer Concert Series  
Lake Oswego*



# Cultural Plan

## CLACKAMAS COUNTY IN 2008

Clackamas County encompasses a diverse scenic landscape from the dense forests of magnificent Mt. Hood to the lush farmlands of the Willamette Valley. Geography separates us, but it is the very thing that creates a rich landscape of ideas and imagination. How we integrate our cultural riches and how we see and hear each other are continuing challenges. As population increases, the impact on the landscape, public infrastructure and cultural life will become key issues.

## STRENGTHS AND CHALLENGES

### Cultural Involvement

#### Strengths

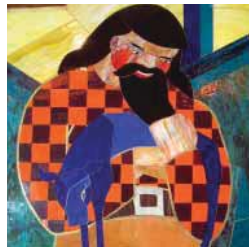
- Most communities have cultural centers
- The county is home to one of the largest populations of artists in the state
- Many people participate in culture through direct creation, audience involvement, volunteering and donating funds

#### Challenges

- Increased leadership across each of arts, heritage and humanities is needed to sustain and expand local culture
- Arts, heritage and humanities programming within the K-12 school system is mostly unmet in many county schools, and K-12 education is key to valuing local culture, increasing cultural participation and building leadership
- Continued financial support is an ongoing necessity



*Mt. Hood  
Cultural Center Museum  
Government Camp*



*Detail of WPA Era Mural  
Blue Ox Bar  
Timberline Lodge*



*Native American Dance  
Clackamas County Fair  
Canby*

*It's important that we don't lose sight of the real mission - to increase livability.*



# Cultural Plan



ArtBack's Mural  
in a Weekend  
Estacada

*Education is the key. We have to integrate arts and culture into education; somehow formulate a K-12 curriculum that hooks people at an early age. The real impact is generational. An adult looking back will remember the theater production they were in, or a field trip to the museum.*



Crafts Booth  
Lake Oswego  
Festival of the Arts



Square Dancers  
Philip Foster Farms  
Eagle Creek

## STRENGTHS AND CHALLENGES *continued...*

### Demographics and Diversity

#### Strengths

- County population has increased by 10% since 2004 in both urbanized and rural areas
- New city charters include Happy Valley and Damascus
- County demographics report increased numbers of people who speak a language other than English in their homes, especially Russian and Spanish, bringing new cultural richness to the area

#### Challenges

- Increased population impacts cities and the land. The ongoing need for protection of rural and wild lands, intrinsic to the county's cultural life, is vital
- The health of local culture and of cultural institutions with increased demand for arts, heritage and humanities programs is directly linked to the strength of public infrastructure, including schools, libraries, parks, roads and public transportation (i.e. when infrastructure is challenged, such as by the loss of federal timber dollars, local culture is also threatened)
- Inclusion of non-English speaking people in community cultural life and sharing their cultural heritage is essential to the health and diversity of communities

### Clackamas County Governance

#### Strengths

- The county has made a strong commitment to sustainability with three interlocking elements: economic, social/cultural and environmental
- The county government has begun to recognize the value of culture to building healthy, sustainable communities and joint management of arts, heritage and tourism through its commissioners and Clackamas County Tourism and Cultural Affairs Department is increasingly promising
- Effective 2009, the Clackamas County Board of Commissioners will increase from three to five members which will impact county cultural support and decision-making

#### Challenges

- Cultural representatives should continue to participate in county planning processes and work closely with commissioners
- Parallel local networks and partnerships are needed for coordinating and sharing resources, and sustaining and increasing local culture



## Cultural Plan

### 2008-2012 GOALS, ACTIONS, BENCHMARK INDICATORS OF SUCCESS



*The Illustrated Man  
performed by Tobias Andersen  
Clackamas Repertory Theatre  
Oregon City*



*Oregon Military  
Museum Barn  
Camp Withycombe  
Clackamas*



*Sculpture  
by Devin Laurence-Field  
Clackamas Community College  
Oregon City*

#### Goal: Increase funding to and support of culture in Clackamas County

**Action:** Advocate with county commissioners and other elected officials

*Indicator of success: Increased public funding to culture*

**Action:** Promote contributions to the Cultural Trust

*Indicator of success: Increased giving from county individuals and businesses to Oregon Cultural Trust*

**Action:** Annually assess and review funding priorities

*Indicator of success: Critical issues identified and addressed*

#### Goal: Increase participation in arts, heritage and humanities

**Action:** Seed partnerships, collaborations and communication between organizations

*Indicator of success: Increased number of grant applications proposing partnership-based projects*

**Action:** Encourage individuals in imaginative expression and promote collaboration with varied organizations

*Indicator of success: Increased individual participation and organizational partnerships*

**Action:** Encourage K-12 cultural participation

*Indicator of success: Increased curricular and extracurricular participation and partnerships in arts, heritage and humanities*

*If you want art, you need to attract artists. Once you have artists,  
you have galleries, performances, etc. and you develop a more artistic  
community.*

## Appendices

The appendices for the Cultural Plan include the following sections and are updated annually. The most current information can be found online at [www.clackamasculturalcoalition.org](http://www.clackamasculturalcoalition.org):

### **Appendix 1 - Funding Priorities**

<http://www.clackamasculturalcoalition.org/priorities.htm>

Specific Funding Priorities are assessed and reviewed annually

### **Appendix 2 - Grant Guidelines and Application**

<http://www.clackamasculturalcoalition.org/project-guidelines.htm>

<http://www.clackamasculturalcoalition.org/application.html>

<http://www.clackamasculturalcoalition.org/faqs.htm>

This Appendix includes the following sections:

- Project Grant Guidelines
- Application (including Cover Page, Budget Form, Proposal, and submission instructions)
- FAQs

### **Appendix 3 - Prior Awards**

<http://www.clackamasculturalcoalition.org/previous.html>

Prior Awards are listed by Funding Priority Category and by year in Press Release.

### **Appendix 4 - Cultural Coalition Organization**

<http://www.clackamasculturalcoalition.org/about.htm>

This Appendix includes the following sections:

- Coalition Mission
- Role
- Structure
- Member Roster
- Planning Process

*Increases in population will present opportunities to define the quality of life through arts and culture.*